



CRCF Power

REPORT Thursday Aug 15, 2013\

A milestone for CRCF!

We have power to the hanger.



Lights ON in our hanger

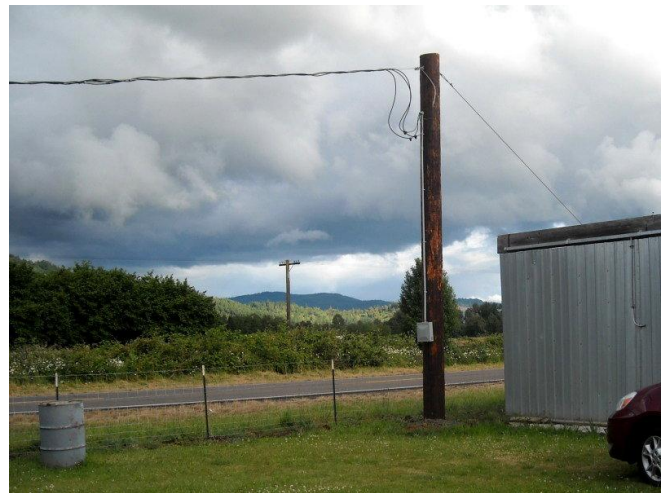
After many delays and several work parties the lights are on in CRCF's hanger.



Starting with the POLES



Then trenching and wire running



Breaker box on pole next to hanger

A little more work is needed to finish up, couple bulbs did not come on.



Work party installing bulbs



Dual florescent fixture in mower storage area



They are working



Power disconnect



Twelve Dual florescent fixtures in hanger



Light switch and quad outlet left of bench



Outlet on south hanger wall



Outlet in mower storage area



Outlet on center post



Right side of bench



Light switch in mower storage area

We now have electricity at the hanger we turned the switch on last Thursday night for me it was kind of like turning on the Christmas Tree when I was a little kid.

We have been working with Jack now for three years to get permits and poles and wire and everything else to accomplish this task. John Risbrough has been very instrumental in this process as well and helped complete the task in a very professional way a special thanks to him.

Rod